

SHADOWSPEC UNITY™

THE EVOLUTION OF SHADE



PATENT-PENDING TECHNOLOGY

SHADOWLIFT™



Gas-assisted, anti-gravity, easy lift. The most advanced umbrella deployment system in the industry.

SHADOWGLIDE™



Using calculated geometry and expert engineering to open or close your umbrella in 3 seconds.

SHADOWLOCK™



Integrated into the mast of the umbrella, a functional solution to 360 degree umbrella rotation.

SHADOWHUB



Our flagship umbrellas have built in LED lights in the central hub.

CANOPY OPTIONS

Features

- 100% Sunbrella™ Marine solution-dyed fabric
- All fabrics can be cleaned, washed and are replaceable
- UV & Fade Resistant
- 10 year Sunbrella™ warranty
- Mould and Mildew Resistant
- Weight: 314 g/m2
- Sun protection - Skin Cancer Foundation's seal of approval



Stock Colour Options



Natural



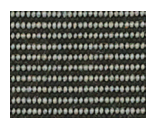
Oyster



Cadet Grey



Taupe



Charcoal Tweed



Charcoal Grey



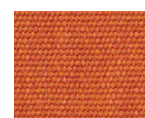
Black



Captain Navy

Full Sunbrella range is available as a custom, non-stock colour option.

Trend Colours Summer 19/20*



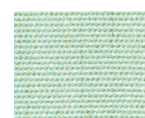
Rust



Silver



Linen



Sea

*Trend colours are non-stock and lead times may vary for non-stock colours.

BEST-IN-CLASS WARRANTY

Relax easy knowing your outdoor umbrella purchase is protected by the industries best warranty and customer support.



Fabric
Warranty



Frame
Warranty

MOUNTING OPTIONS

Surface Plate

For deck, patio and concrete mounting.



In-Ground Anchor

For mounting with a concrete footing.



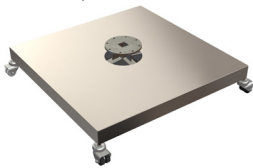
Wall Fixings

For when ground mounting isn't possible.



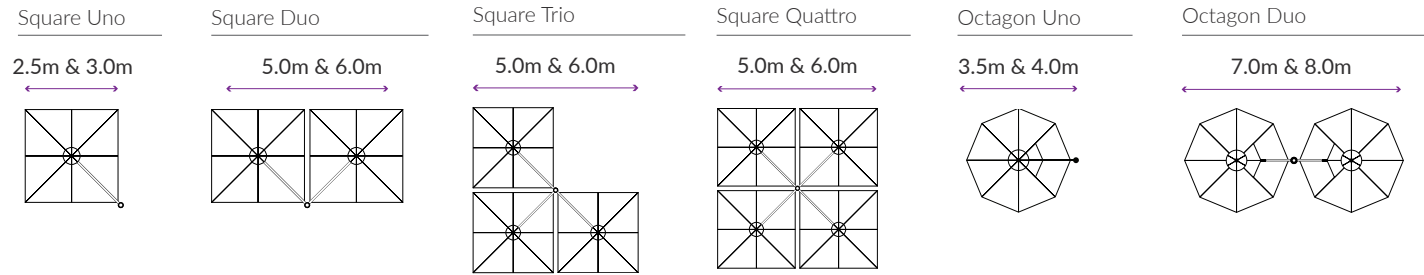
Free-standing Base

For complete customised maneuverability.



Pavers are required for ballast and are not supplied.
Optional castor wheels shown.

SIZE & CONFIGURATION



UMBRELLA DIMENSIONS

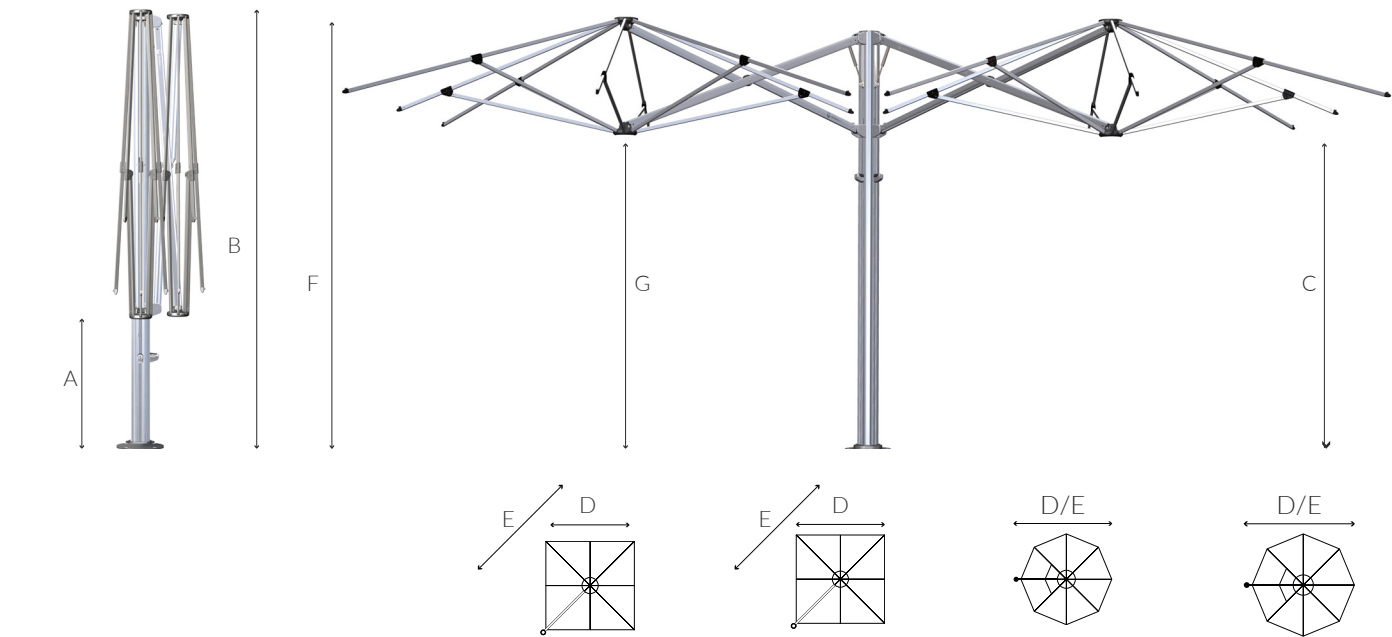


Diagram Legend

		2.5m	8'2"	3.0m	9'10"	3.5m	11'6"	4.0m	13'2"
A	Ground to central frame hub when closed*	870mm	2'10"	623mm	2'1"	1096mm	3'7"	848mm	2'9"
B	Height of umbrella to top of mast cap*	2916mm	9'7"	2916mm	9'7"	2916mm	9'7"	2916mm	9'7"
C	Ground to lower outer edge of canopy*	2235mm	7'4"	2232mm	7'4"	2249mm	7'5"	2190mm	7'2"
D	Centre of mast to outside edge of canopy	2665mm	8'9"	2993mm	9'10"	3500mm	11'6"	4000mm	13'2"
E	Diagonal from centre of mast to corner	3639mm	11'11"	4101mm	13'6"	3473mm	11'5"	3950mm	13'0"
F	Total height to top of canopy*	2905mm	9'6"	2830mm	9'3"	2985mm	9'10"	2908mm	9'7"
G	Ground to central frame hub when open*	2163mm	7'1"	2084mm	6'10"	2239mm	7'4"	2162mm	7'1"

*Portable Base installations will add 165mm to these measurements. Adding portable base wheels also will add a further 45-80mm/2-3". All sizings are +/- 2.5mm / 3/32" and subject to change without notice.

SHADOWSPEC SERENITY™

PRECISION ENGINEERED AMBIENCE



PATENT-PENDING TECHNOLOGY

SHADOWLIFT™



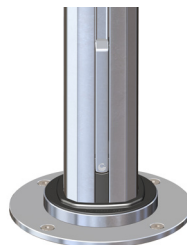
Gas-assisted, anti-gravity, easy lift. The most advanced umbrella deployment system in the industry.

SHADOWGLIDE™



Using calculated geometry and expert engineering to open or close your umbrella in 3 seconds.

SHADOWLOCK™



Integrated into the mast of the umbrella, a functional solution to 360 degree umbrella rotation.

SHADOWHUB



Our flagship umbrellas have built in LED lights in the central hub.

CANOPY OPTIONS

Features

- 100% Sunbrella™ Marine solution-dyed fabric
- All fabrics can be cleaned, washed and are replaceable
- UV & Fade Resistant
- 10 year Sunbrella™ warranty
- Mould and Mildew Resistant
- Weight: 314 g/m2
- Sun protection - Skin Cancer Foundation's seal of approval



Stock Colour Options



Natural



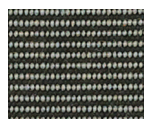
Oyster



Cadet Grey



Taupe



Charcoal Tweed



Charcoal Grey



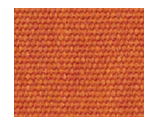
Black



Captain Navy

Full Sunbrella range is available as a custom, non-stock colour option.

Trend Colours Summer 19/20*



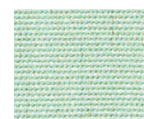
Rust



Silver



Linen



Sea

*Trend colours are non-stock and lead times may vary for non-stock colours.

BEST-IN-CLASS WARRANTY

Relax easy knowing your outdoor umbrella purchase is protected by the industries best warranty and customer support.



Fabric
Warranty

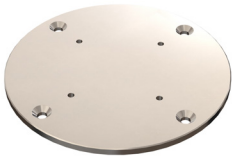


Frame
Warranty

MOUNTING OPTIONS

Surface Plate

For deck, patio and concrete mounting.



In-Ground Anchor

For mounting with a concrete footing.



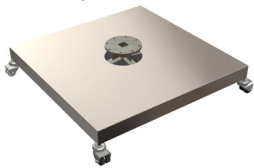
Wall Fixings

For when ground mounting isn't possible.



Free-standing Base

For complete customised maneuverability.

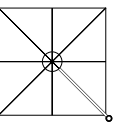


Pavers are required for ballast and are not supplied.
Optional castor wheels shown.

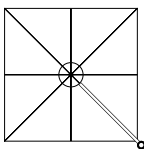
SIZE & CONFIGURATION

Square

2.5m / 8'2"

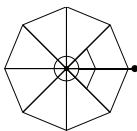


3.0m / 9'10"

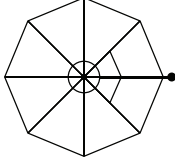


Octagon

3.5m / 11'6"

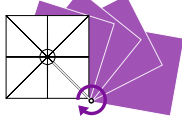
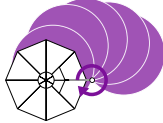


4.0m / 13'2"



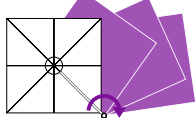
Rotates 360°

Ground Mounted



Rotates 180°

Wall Mounted



UMBRELLA DIMENSIONS

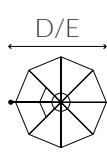
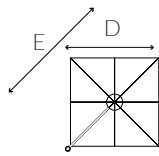
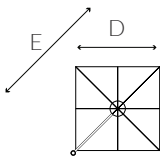
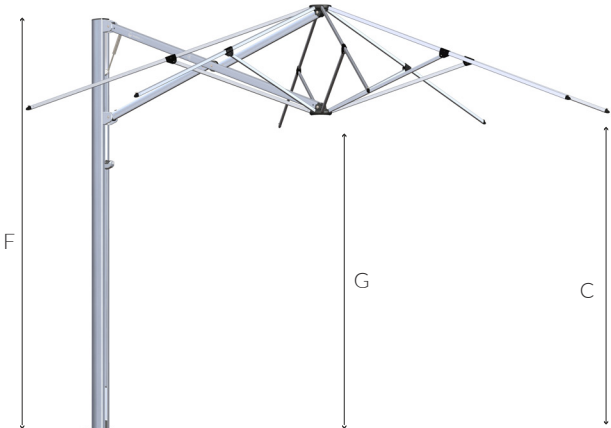


Diagram Legend

- A Ground to central frame hub when closed*
- B Height of umbrella to top of mast cap*
- C Ground to lower outer edge of canopy*
- D Centre of mast to outside edge of canopy
- E Diagonal from centre of mast to corner
- F Total height to top of canopy*
- G Ground to central frame hub when open*

	2.5m	8'2"	3.0m	9'10"	3.5m	11'6"	4.0m	13'2"
A	857mm	2'10"	610mm	2'0"	1083mm	3'7"	835mm	2'9"
B	2903mm	9'6"	2903mm	9'6"	2903mm	9'6"	2903mm	9'6"
C	2222mm	7'4"	2219mm	7'3"	2236mm	7'4"	2177mm	7'2"
D	2665mm	8'9"	2993mm	9'10"	3500mm	11'6"	4000mm	13'2"
E	3639mm	11'11"	4101mm	13'6"	3473mm	11'5"	3950mm	13'0"
F	2892mm	9'6"	2817mm	9'3"	2972mm	9'9"	2895mm	9'6"
G	2150mm	7'0"	2071mm	6'10"	2226mm	7'4"	2149mm	7'0"

*Portable Base installations will add 165mm to these measurements. Adding portable base wheels also will add a further 45-80mm/2-3". All sizings are +/- 2.5mm / 1/8" and subject to change without notice.

SU10

COMMERCIAL CENTRE POLE UMBRELLA



Features at a glance

- Commercial grade aluminium frame structure
- Stainless steel hardware for longevity
- Durable high performance hub and fittings
- Telescopic mast enables umbrella to clear most furniture when closing
- Robust 82.5mm / IMM mast with 3.4mm wall thickness

Canopy

- Premium Sunbrella Acrylic - 100% Solution Dyed
- Waterproof Rating: >300mm water column
- Maintenance: All fabrics can be washed and replaced
- Weight: 315 g/m2
- Colourfastness: 7-8/8
- Shade Rating: UPF 50+

Colour Options*



*other custom colours available on request.

Accessories



Rain Gutter

Adjoining square umbrellas can be connected with removable rain gutters to increase weatherproof area.

BEST-IN-CLASS WARRANTY

Relax easy knowing your outdoor umbrella purchase is protected by the industries best warranty and customer support.



**Fabric
Warranty**

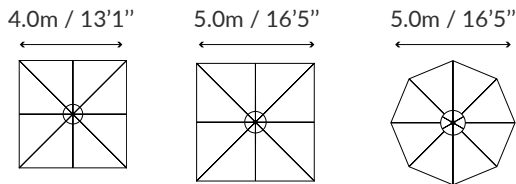


**Frame
Warranty**

SU10

COMMERCIAL CENTRE POLE UMBRELLA

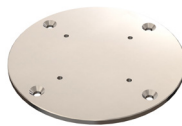
Size & Configuration



Mounting Options

Surface Plate

For deck, patio and concrete mounting.



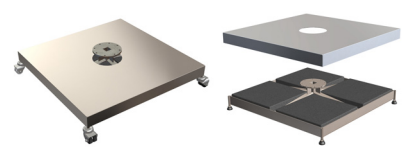
In-Ground Anchor

For mounting with a concrete footing.



Free-Standing Base*

For complete customised maneuverability.



Pavers are required for ballast and are not supplied. Optional castor wheels shown.

Umbrella Dimensions

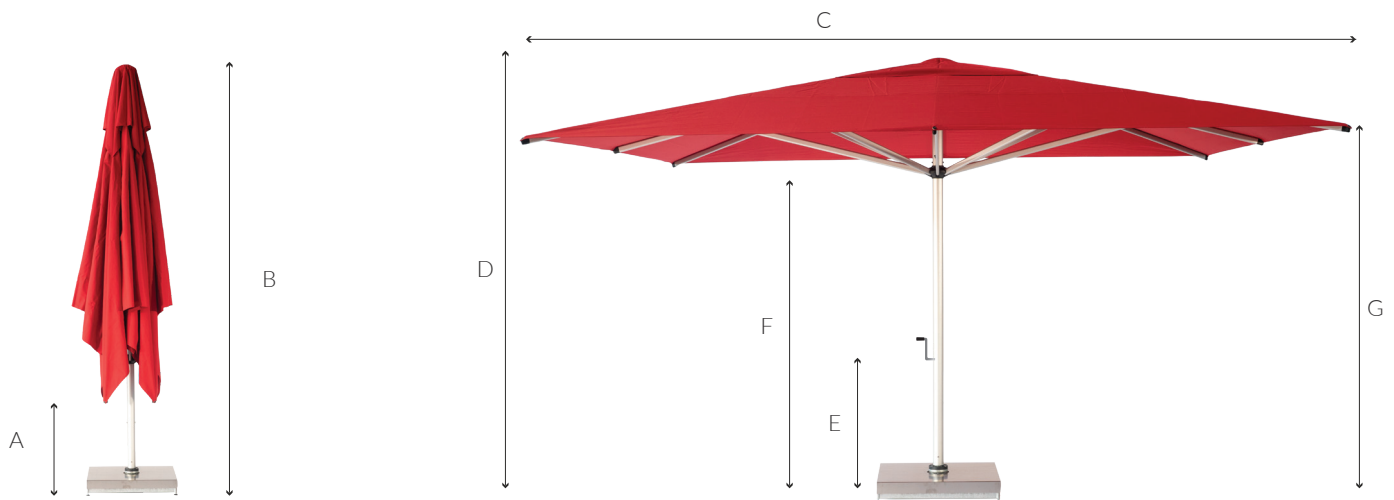


Diagram Legend

- A** Closed Canopy Clearance*
- B** Overall Height when closed*
- C** Canopy Width
- D** Overall Height*
- E** Winder Handle Height*
- F** Hub Height*
- G** Arms Height*

4.0m / 13'1" Square

- 900mm / 2'11"
- 3740mm / 12'3"
- 4000mm / 13'1"
- 2870mm / 9'5"
- 840mm / 2'9"
- 2110mm / 6'11"
- 2270mm / 7'5"

5.0m / 16'5" Square

- 730mm / 2'5"
- 4280mm / 14'1"
- 5000mm / 16'5"
- 3120mm / 10'3"
- 920mm / 3'0"
- 2260mm / 7'5"
- 2470mm / 8'1"

5.0m / 16'5" Octagon

- 1040mm / 3'5"
- 3530mm / 11'7"
- 4600mm / 15'1"
- 2810mm / 9'3"
- 840mm / 2'9"
- 2150mm / 7'1"
- 2270mm / 7'5"

*Portable Base installations will add 120mm/4.7" to these measurements. Adding portable base wheels also will add a further 45-80mm/2-3".

SU4 TILTING OFFSET UMBRELLA



Features at a glance

- Marine grade aluminium frame and stainless steel hardware for longevity
- Elegant and simple to operate tilt system
- Rotates 360°
- Durable high performance hub and fittings
- Custom designed protective cover included

Canopy

- Commercial Grade: 100% solution dyed
- Maintenance: All fabrics can be washed and are replaceable
- Shade Rating: UPF 50+
- Colourfastness: 4/5
- Weight: 290 g/m2
- Waterproof Rating: >300mm water column

Colour Options*



Egg Shell White



Black Widow



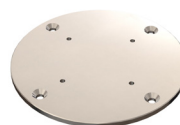
Boulder Grey

*other non stock colours available on request.

Mounting Options

Surface Plate

For deck, patio and concrete mounting.



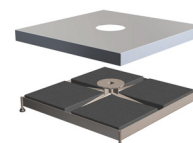
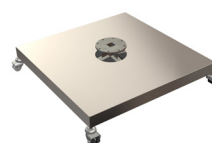
In-Ground Anchor

For mounting with a concrete footing.



Free-Standing Base*

For complete customised maneuverability.



Pavers are required for ballast and are not supplied.
Optional castor wheels shown.

BEST-IN-CLASS WARRANTY

Relax easy knowing your outdoor umbrella purchase is protected by the industries best warranty and customer support.



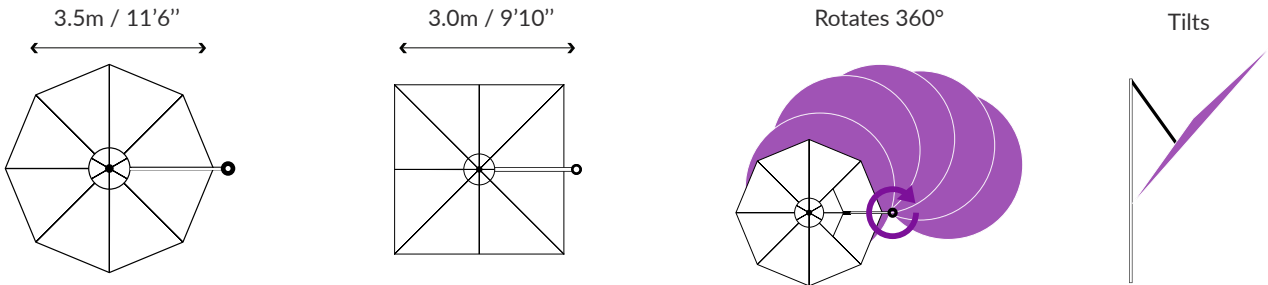
Fabric
Warranty



Frame
Warranty

SU4 TILTING OFFSET UMBRELLA

Size & Configuration



Umbrella Dimensions

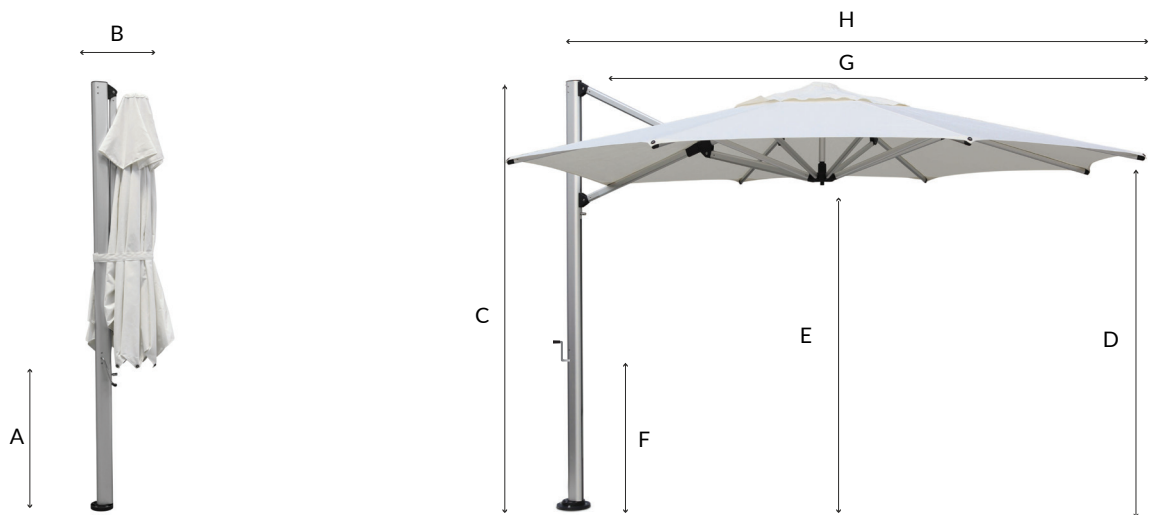


Diagram Legend

A	Clearance of Closed Strut Arms*
B	Depth of Umbrella When Closed
C	Overall Height*
D	Height to Edge of Canopy*
E	Height to Centre Hub*
F	Handle Height*
G	Canopy Width
H	Centre of Mast to Outside Edge of Canopy

3.5m / 11'6" Octagon

880mm / 2'11"
450mm / 1'6"
2723mm / 8'11"
2125mm / 7'0"
2065mm / 6'9"
940mm / 3'1"
3480mm / 11'5"
3595mm / 11'10"

3.0m / 9'10" Square

880mm / 2'11"
450mm / 1'6"
2723mm / 8'11"
2125mm / 7'0"
2065mm / 6'9"
940mm / 3'1"
3000mm / 9'10"
3595mm / 11'10"

*Portable Base installations will add 120mm/4.7" to these measurements. Adding portable base wheels also will add a further 45-80mm/2-3".

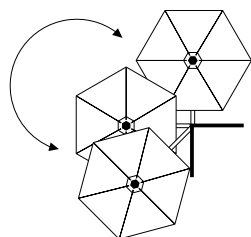


Features at a glance

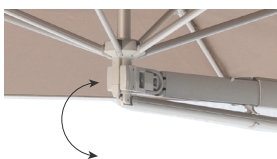
- Manufactured from top quality anodised aluminium, stainless steel and other non-corrosive materials
- Telescopic arm - 1400mm / 4'7" out to 1800mm / 5'11"
- Umbrella can swing horizontally
- Umbrella can tilt 18°



400mm / 1'4"
Telescopic Arm
Adjustment



Rotates 180°



Tilts 18°

Canopy

- Premium Olefin 'COSLAN' - 100%
- Maintenance: All fabrics can be washed and are replaceable
- Shade Rating: UPF 40+
- Colourfastness: 6-7/8
- Weight: 190 g/m2

Colour Options*

	
White Sand	Buttercup
	
Taupe	Black Widow
	
Charcoal	Denim Blue
	
Terracotta	Platinum Grey

*other non stock colours available on request.

Mounting



One Wall Bracket
included as standard
(extra brackets optional)

BEST-IN-CLASS WARRANTY

Relax easy knowing your outdoor umbrella purchase is protected by the industries best warranty and customer support.



**Fabric
Warranty**



**Frame
Warranty**

SU3

WALL MOUNTED UMBRELLA

Umbrella Dimensions

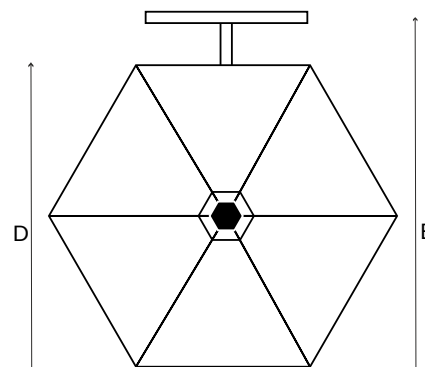
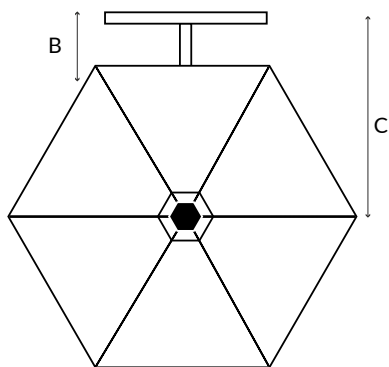
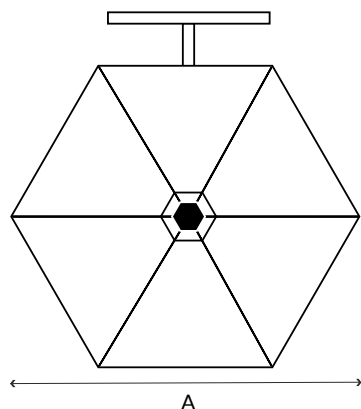


Diagram Legend

A	Canopy Width
B	Overall Depth from Wall
C	Canopy Length
D	Flat-edge to flat-edge
E	Wall to canopy edge

2.7m / 8'10"

2700mm / 8'10"

230mm - 650mm / 0'9" - 2'2"

1520mm - 1920mm / 5'0" - 6'4"

2340mm / 7'8"

2570mm - 3000mm / 8'5" - 9'8"



Features at a glance

- Simple and easy to open and close
- Heavy-duty double pulley system
- Commercial grade pulley rope
- Glass-filled nylon high-performance hubs and brackets
- Marine grade anodised aluminium frame and pole
- Stainless steel fastenings and components
- Commercial strength pole with a large diameter and thick aluminium wall.

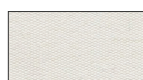


All Shadowspec SU2 Umbrellas have eight full strength 20mm x 33mm / 3/4" x 1 1/8" strut arms.

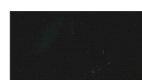
Canopy

- Premium 100% solution dyed canopy
- Maintenance: All fabrics can be washed and are replaceable
- Shade Rating: UPF 50+

Colour Options*



Egg Shell White



Black Widow



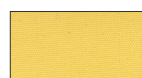
Colbalt Blue



Rich Red



Boulder Grey



Lemon Yellow

*other non stock colours available on request.

Custom Branding

We specialise in custom branding umbrellas with your logo/brand and message.



BEST-IN-CLASS WARRANTY

Relax easy knowing your outdoor umbrella purchase is protected by the industries best warranty and customer support.



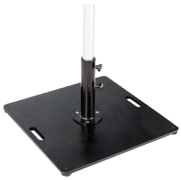
**Fabric
Warranty**



**Frame
Warranty**

SU2 CAFE & RESORT UMBRELLA

Mounting Options



Steel Flat Plate Base
Single plate (approx 30kgs)
recommended for
2.0m / 6'7" square.
& 2.7m / 8'10" octagon sizes.

Double plate recommended
for 3.0m / 9'8" sq
& 4.0m / 13'1" oct sizes.



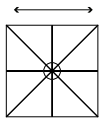
Concrete Base
Is suitable for 2.0m / 6'7"
square & 2.7m / 8'10"
Octagon sizes only.



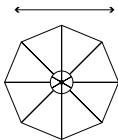
Surface Plate
Bolt down mounting option.
Suitable for all SU2 sizes.

Size & Configuration

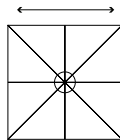
2.0m / 6'7"



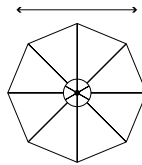
2.7m / 8'10"



3.0m / 9'10"



4.0m / 13'1"



Umbrella Dimensions



Diagram Legend

		2.0m / 6'7"	2.7m / 8'10"	3.0m / 9'10"	4.0m / 13'1"
A	Overall Height*	2600mm / 8'6"	2645mm / 8'8"	2935mm / 9'8"	2850mm / 9'4"
B	Clearance of Closed Strut Arms*	1150mm / 3'10"	1250mm / 4'1"	780mm / 2'7"	815mm / 2'8"
C	Canopy Width*	2000mm / 6'7" sq.	2700mm / 8'10" dia.	3000mm / 9'10" sq.	4000mm / 13'1" dia.
D	Head Clearance*	2200mm / 7'3"	2200mm / 7'3"	2295mm / 7'6"	2260mm / 7'5"
E	Pole outside diameter	38mm / 1½"	38mm / 1½"	48mm / 2"	48mm / 2"

Note: All measurements are rounded and are subject to change.

Adding portable base wheels also will add a further 45-80mm/2-3"